

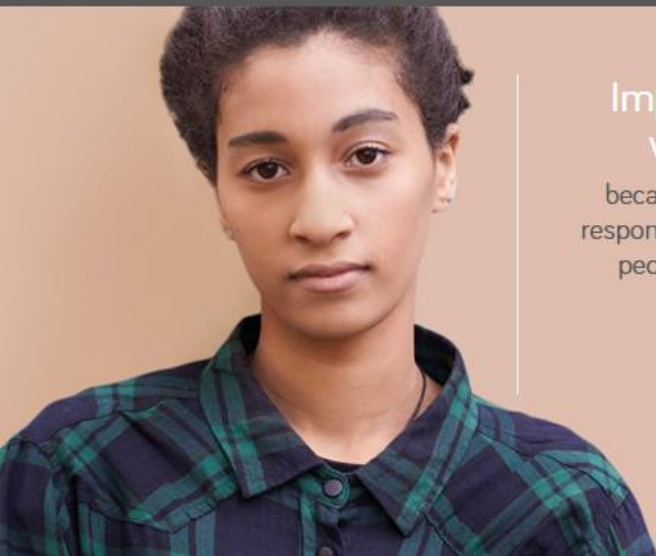


The
Point of Care
Foundation

Introduction to Schwartz Rounds

27 April 2023

We are working to radically improve the way people are cared for and to support the staff who deliver care



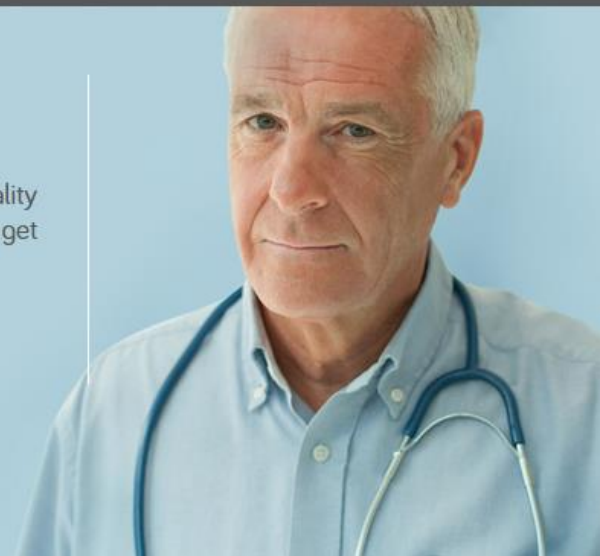
Improving the way we are cared for

because understanding and responding to the needs of all people is what delivers the highest quality care



Supporting healthcare staff

because delivering high quality care is only possible if staff get the practical and emotional support they need



Kenneth Schwartz

“the ordeal has been punctuated by moments of exquisite compassion. I have been the recipient of an extraordinary array of human and humane responses to my plight. These acts of kindness – the simple human touch from my caregivers – have made the unbearable bearable.”



<https://www.youtube.com/watch?v=0YzSP-T2pDQ>

Schwartz Rounds

Confidential forum for **ALL staff** to come together once a month to reflect on the non-clinical aspects of caring for patients – that is, the **emotional and social experiences** associated with their work.

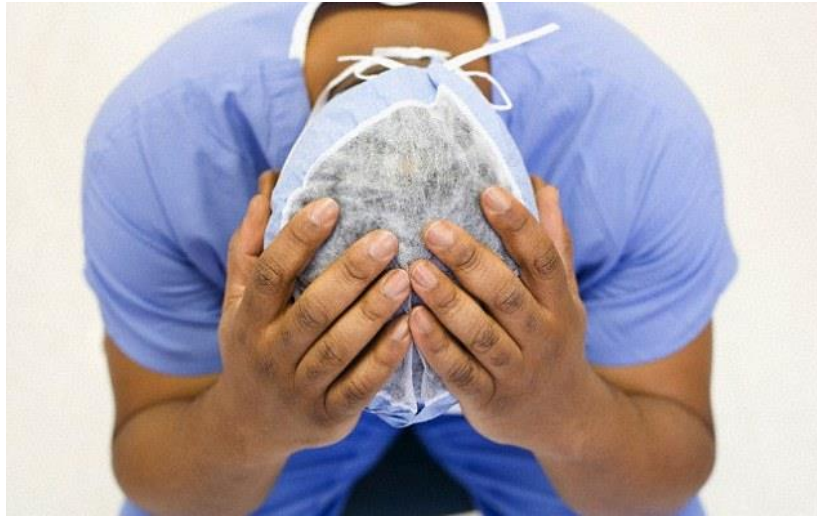
At each Round 2-3 people present an experience from their work.

Story is told from the **staff perspective**



'We have to get on with the job'

Distressing situations become the **norm**.



Staff use **protective strategies** to help deal with the emotional distress

Such strategies can **inhibit** the ability to empathise and connect with patients

Schwartz Rounds in Wales

- Aneurin Bevan University Health Board
- Betsi Cadwaladr University Health Board
- Cardiff & Vale University Health Board
- All Wales Higher Education Institutions (HEI's) Schwartz Rounds for healthcare students.

The agreement with The Point of Care Foundation

- Term of the agreement – two years
- Licence to run Schwartz Rounds in the UK and Ireland is held by The Point of Care Foundation
- After a two-year implementation there is membership agreement

What PoCF provides:

- Training programme (eLearning and experiential)
- Mentor support across the two years
- Access to Schwartz Community events
- Access to online resources and member part of the Point of Care Foundation's website
- Access to peer networks
- Support from central Schwartz team at the Point of Care Foundation

Thank you

info@pointofcarefoundation.org.uk

www.pointofcarefoundation.org.uk

farhananargis@pointofcarefoundation.org.uk

adrian.neal@wales.nhs.uk



The
Point of Care
Foundation