

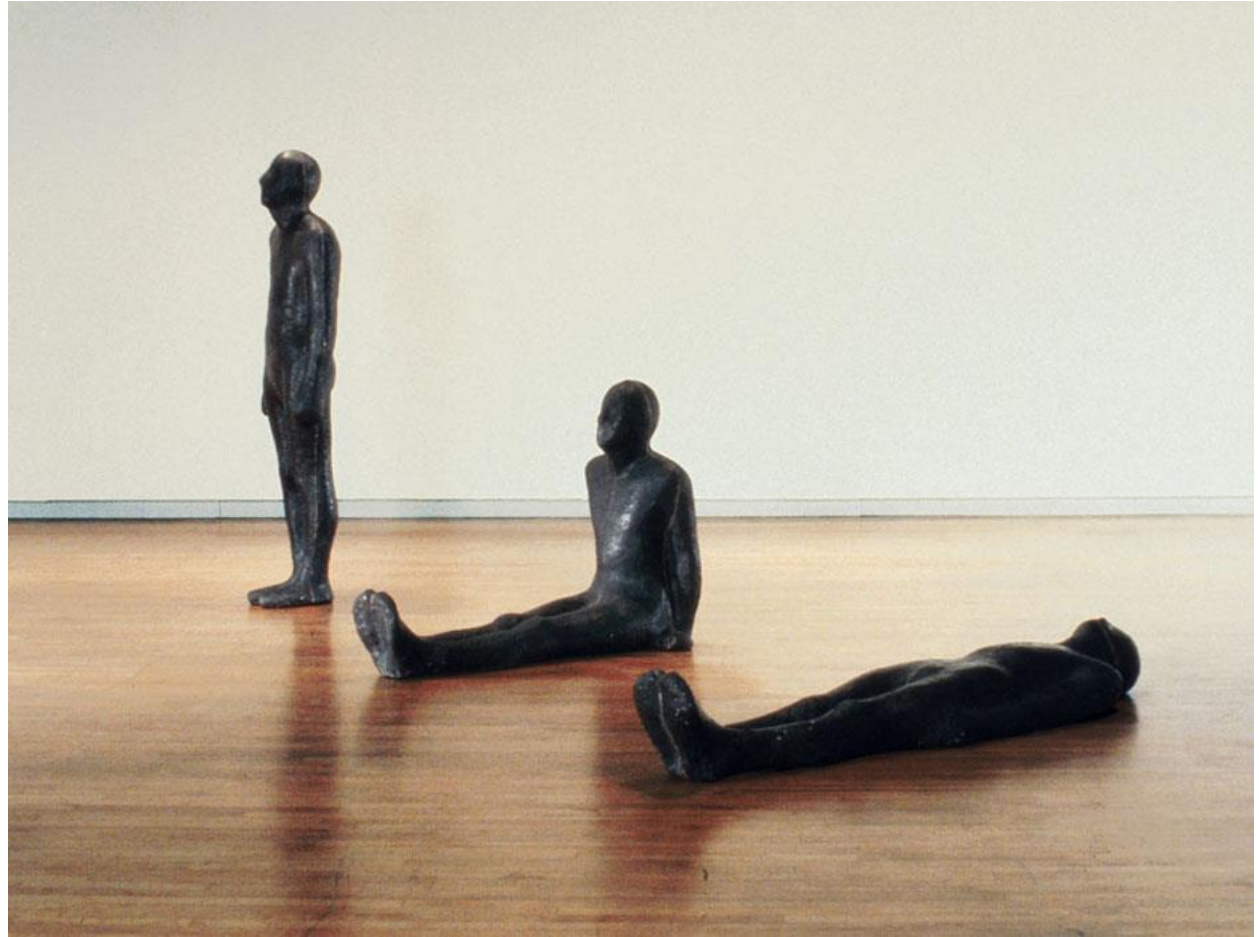
Getting the position right!

Jenny Rolfe Msc

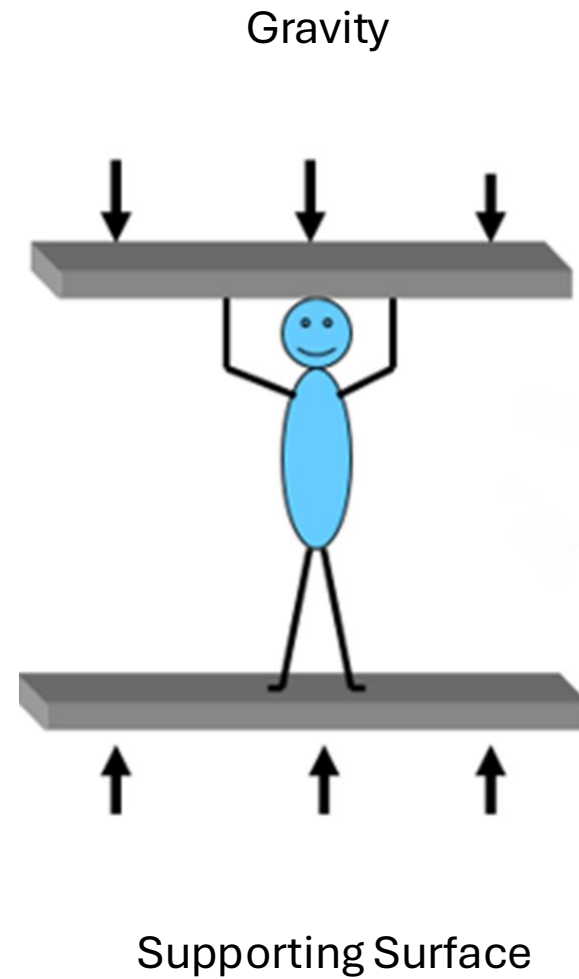
Occupational Therapist

Posture

- Standing
- Sitting
- Lying



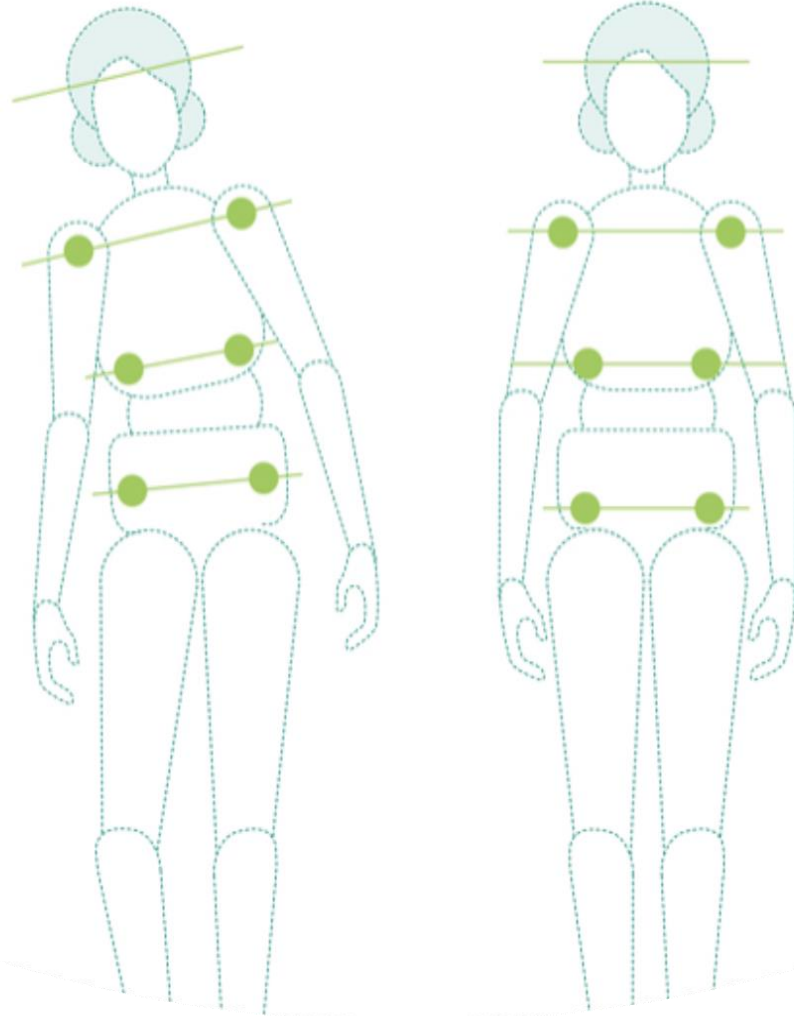
Human Sandwich

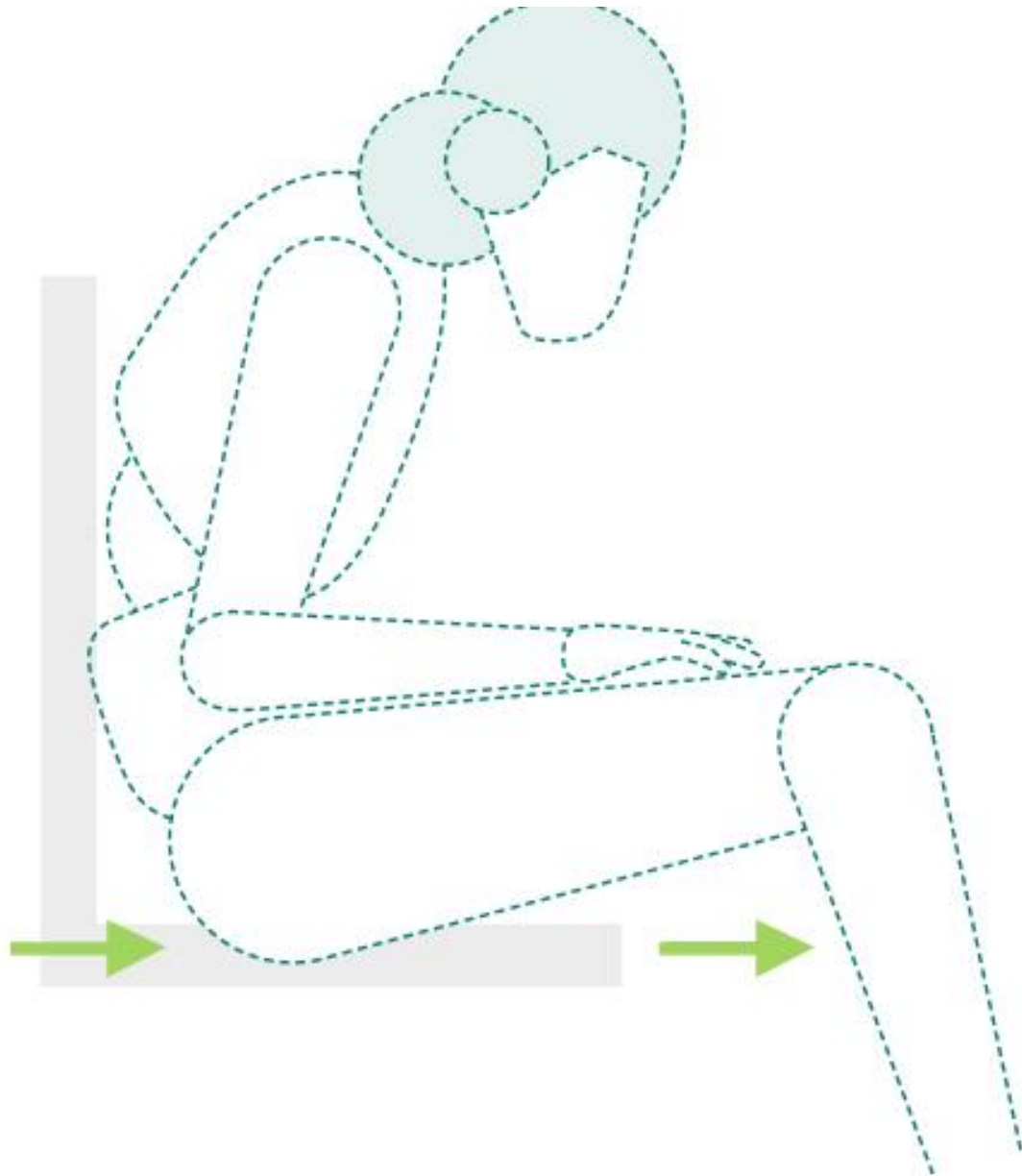


Symmetry = Stability = Mobility



Symmetry

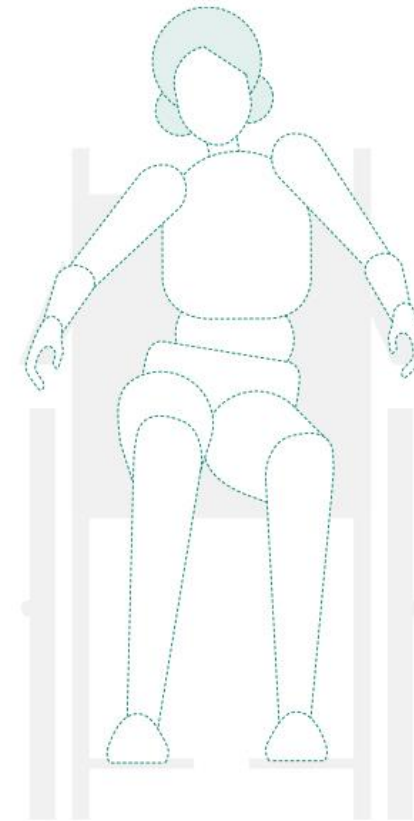




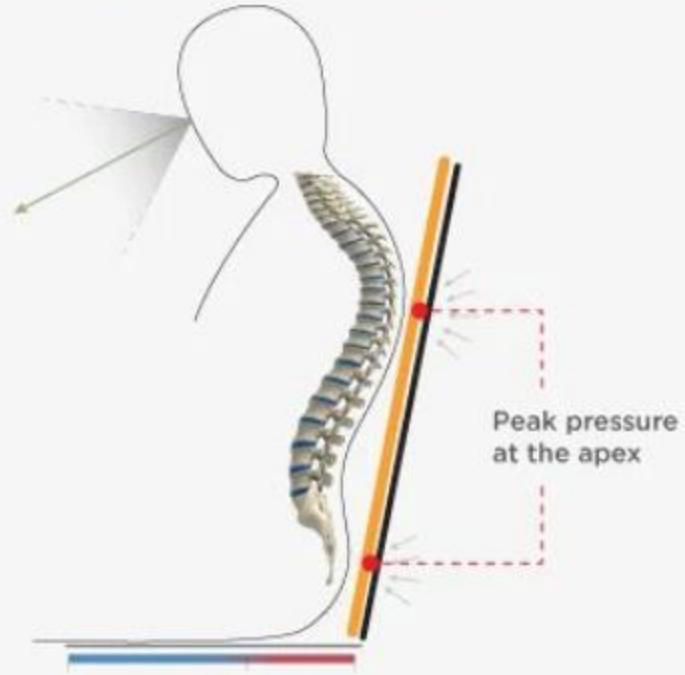
MND

- WEAKNESS
- INABILITY TO KEEP UPRIGHT AGAINST GRAVITY
- SHEAR
- KYPHOSIS
- HEAD DROP

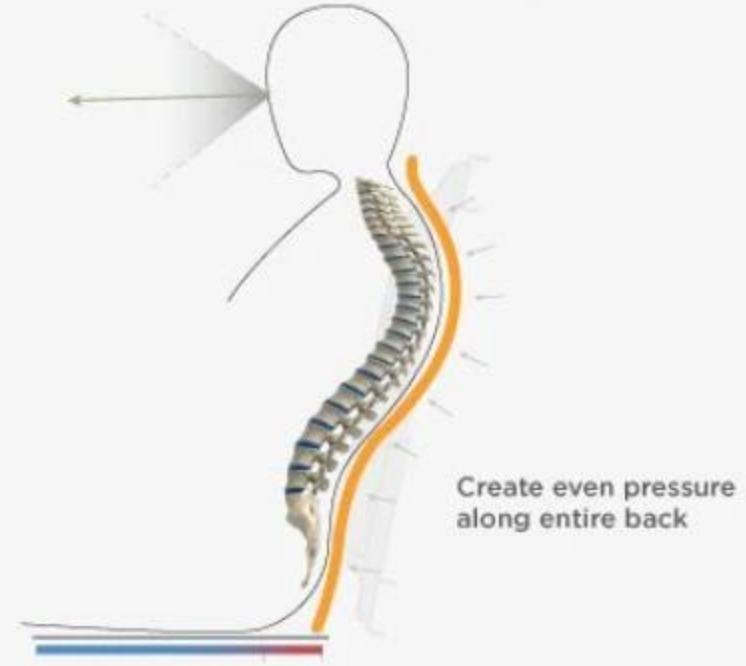
Pelvis : Key stone and foundation



Non-Adjustable Back Support



Adjustable Back Support

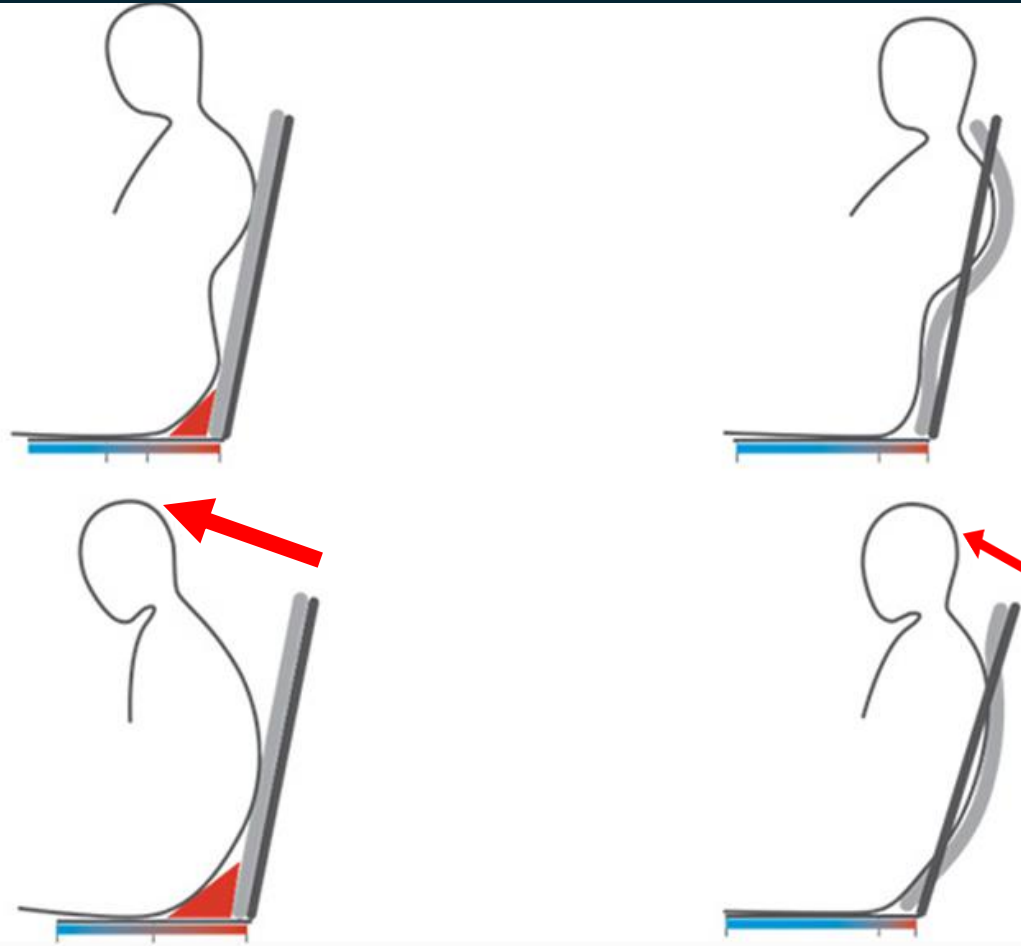


← Line of Sight

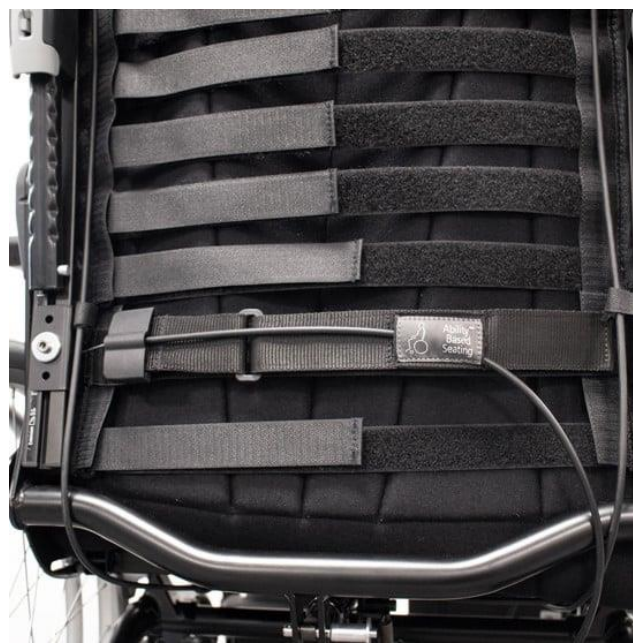
● Good Seat Contact

● Poor Seat Contact

Problems with kyphosis and non accommodation









Accora



Review and Demonstration

Specialised, Electrically Powered Wheelchairs



- Powered tilt
- Powered recline
- (powered rise)
- (powered leg elevation)
- Angle adjustable
hangers and foot plates
- Angle adjustable
headrest
- Tension adjustable
back rest
- Wide padded arm rests
- Pressure cushion
- High specification of
wheelchair controls to
plug and play

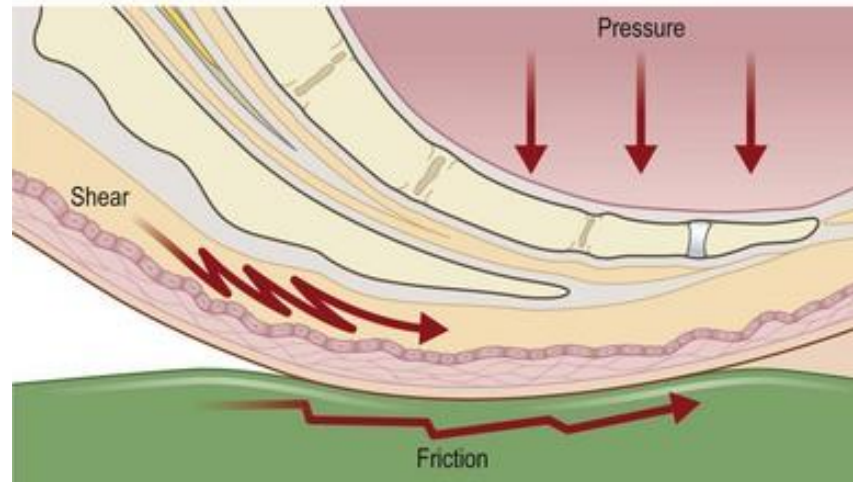
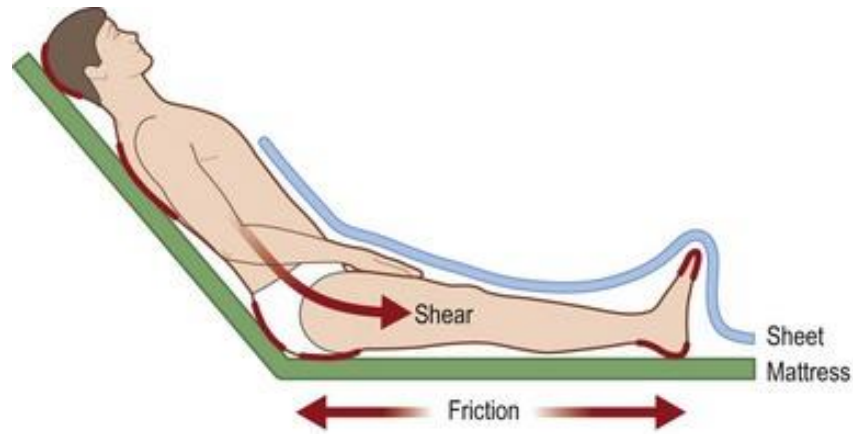
SSKIN Bundle – pressure care



Pressure risks MND

- Low nutrition
- Low body weight
- Soft tissue wasting
- Reducing mobility
- Bony prominences
- Lack of accommodation of posture (kyphosis, shear and sliding)

Head position:
Moisture lesions
Pressure on chest / chin



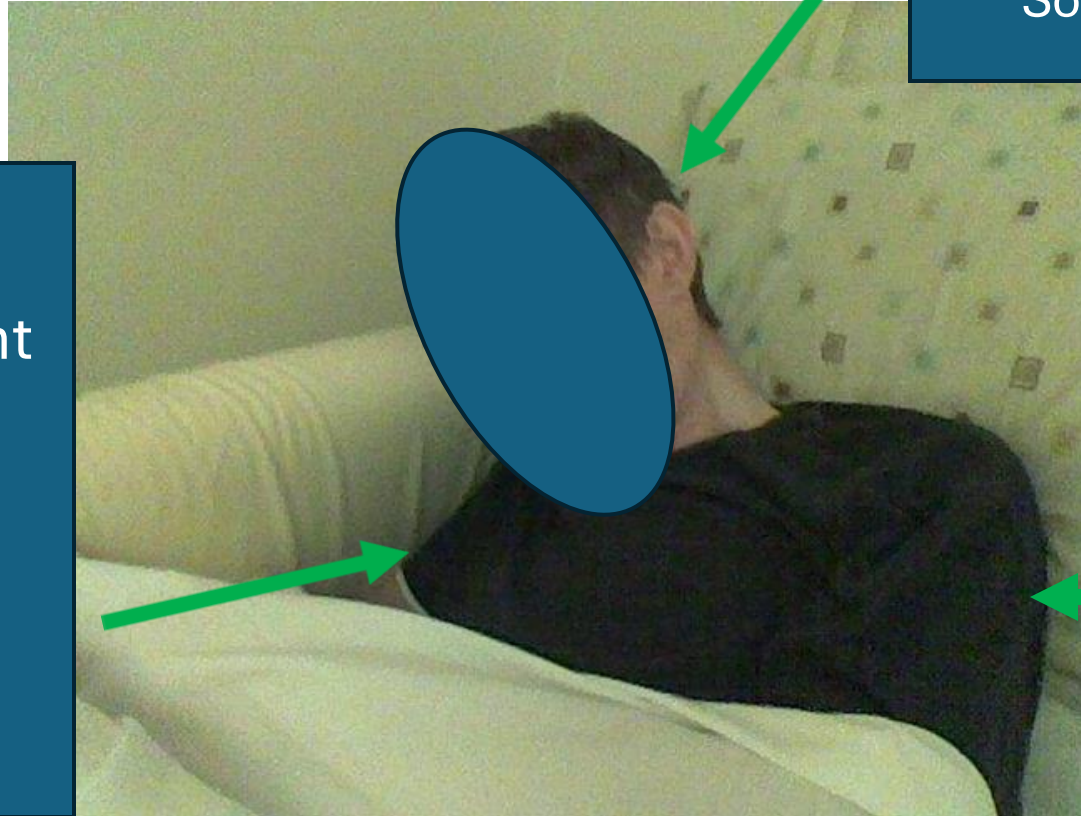

Configura[®]
Comfort



www.configura.uk.com

LYING SUPPORTS

Increased loading on right side
Pressure
Discomfort
Pain
Agitation



Uneven loading – pressure on right ear – agitated
Poor line of vision
Poor head position
Soft tissue changes

Non weight bearing through left side
Lack of sensory feedback

Pillows under whole length of arm to support upper arm, spreading loading

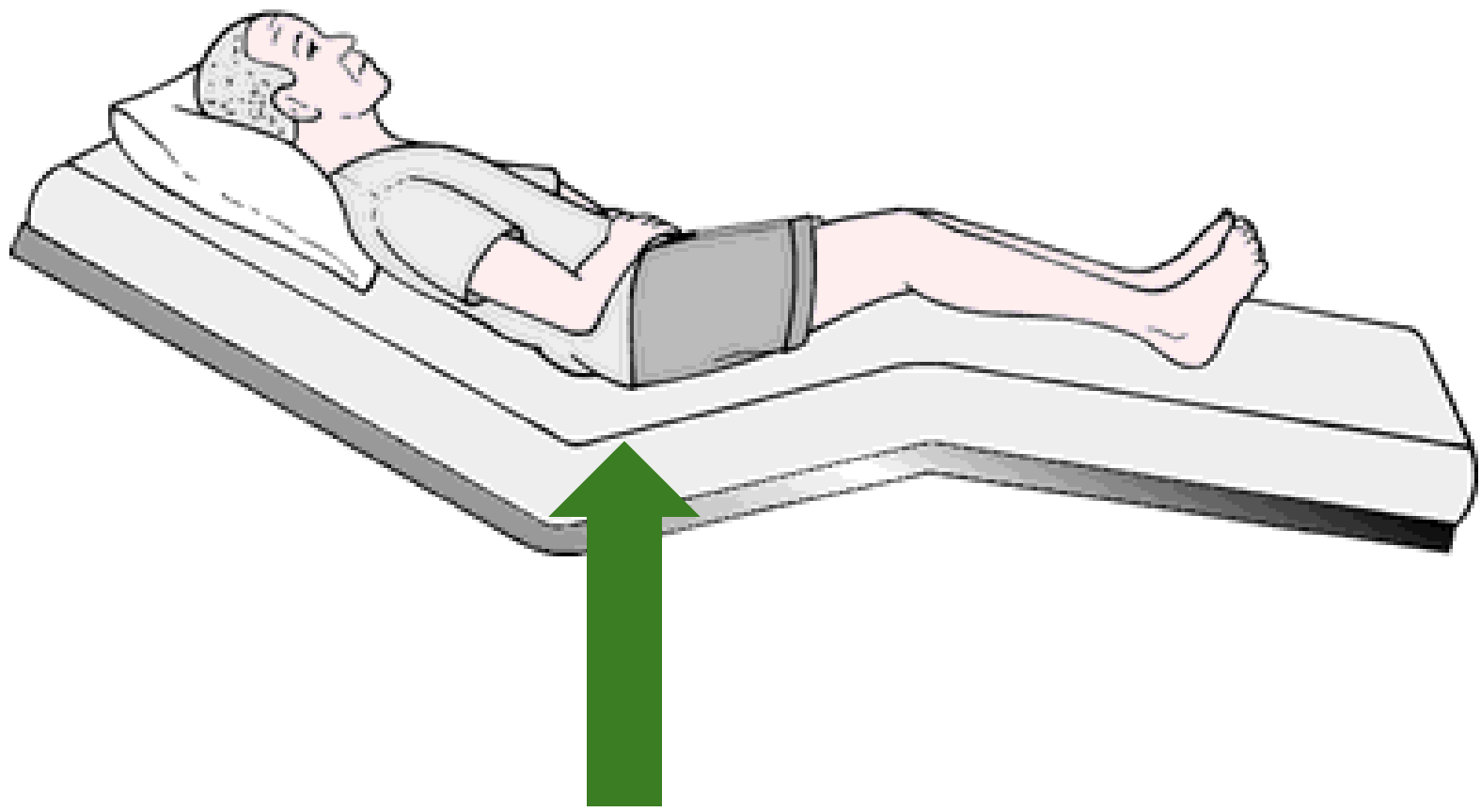
Pillows supporting under shoulders to prevent them dropping back and increase base of support

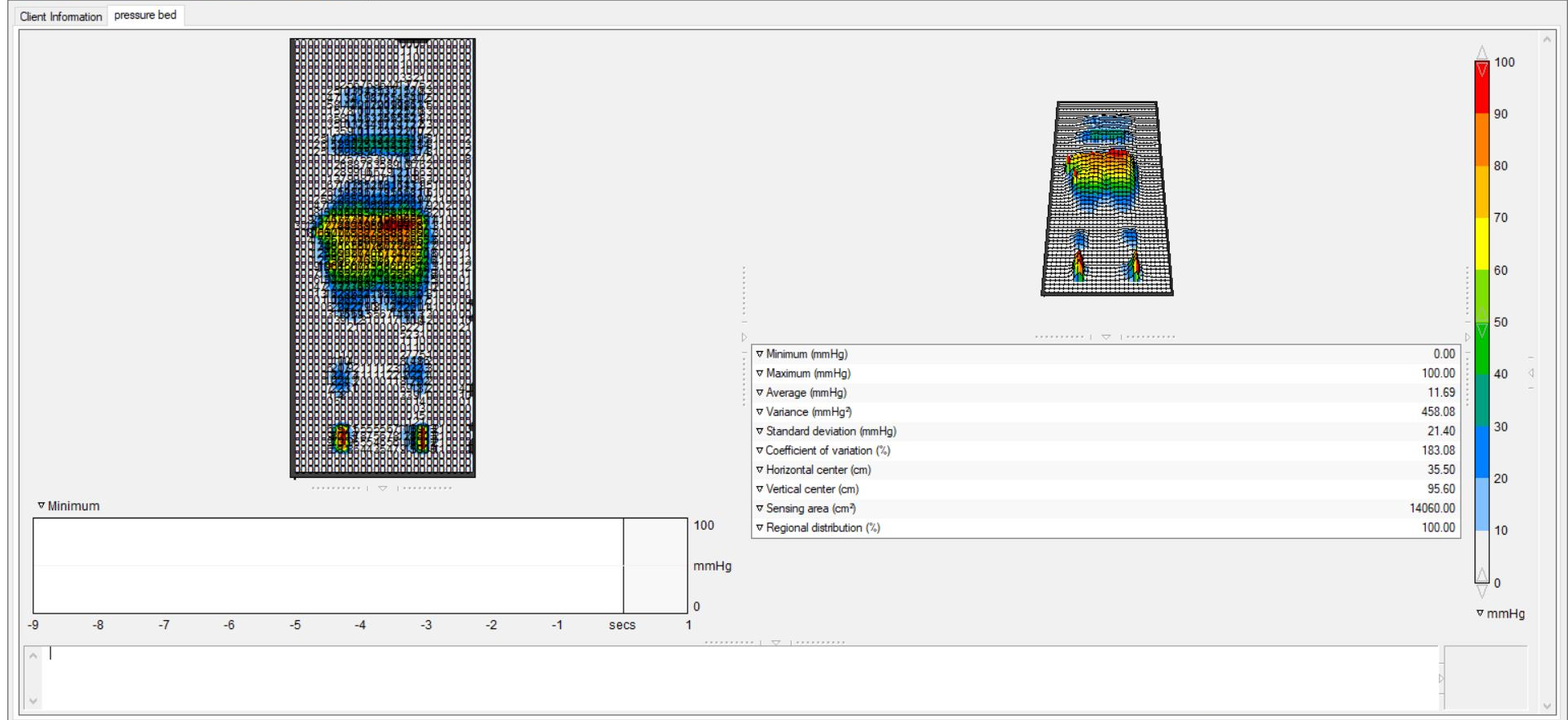
Large pillow /s under knees to give flexion at hips and knees (knee break)

Pillow under calf to support whole length of leg spreading loading

Heals off mattress completely reducing pressure risk

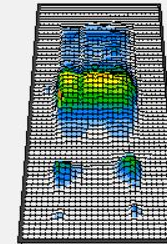
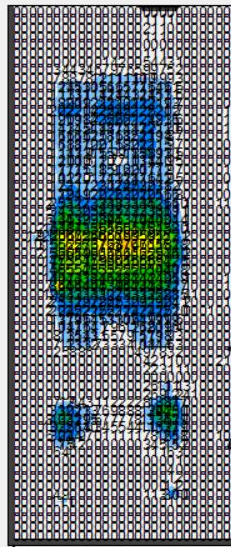




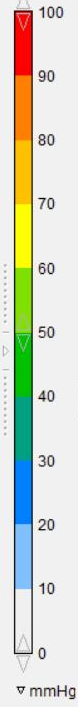


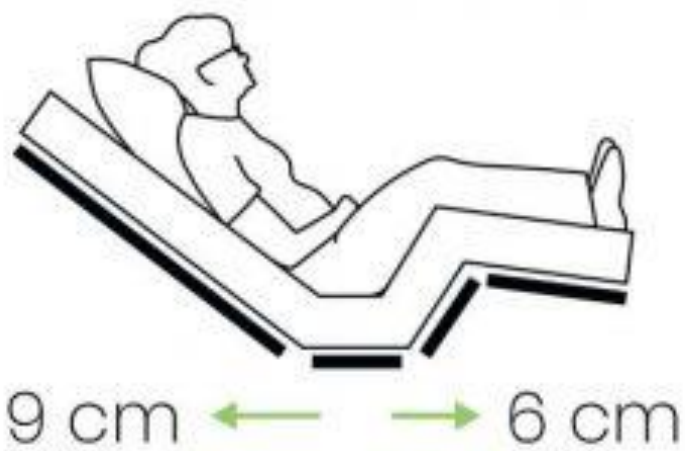


Client Information pressure bed



Minimum (mmHg)	0.00
Maximum (mmHg)	89.29
Average (mmHg)	9.18
Variance (mmHg ²)	238.58
Standard deviation (mmHg)	15.45
Coefficient of variation (%)	168.18
Horizontal center (cm)	35.90
Vertical center (cm)	102.09
Sensing area (cm ²)	14060.00
Regional distribution (%)	100.00





BodyMove regression reduces friction and shear



No regression increases friction and shear

Standing



a

Head drop

Shoulders sublux, arch
back opening lumbar
lordosis

Hips pushed forward to keep
balance

https://www.mdpi.com/medicina/medicina-58-00452/article_deploy/html/images/medicina-58-00452-g001.png



<https://www.necksolutions.com/head-supports/>



<https://www.orliman.com/en/producto/neoprene-bilateral-shoulder-support-2/>



<https://beagleorthopaedic.com/double-shoulder-brace/>



<https://remap.org.uk/solutions/head-support-2/>

Thank you

Jenny.rolfe@Accora.care

Any questions?